

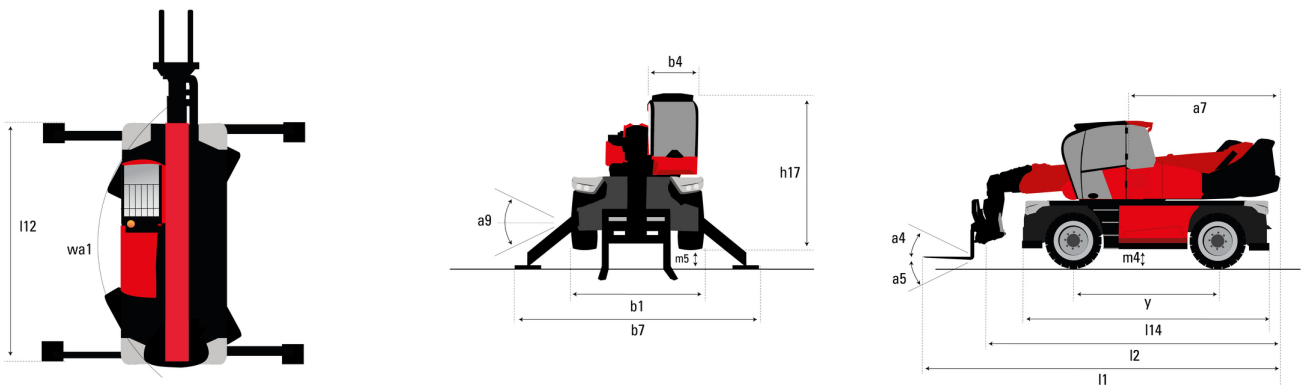
Technical sheet :

MRT 2660 E



Capacities		Metric	Imperial
Max. capacity		6000 kg	13228 lb
Max. lifting height		25.90 m	85 ft
Max. outreach		21.70 m	71 ft 2 in
Weight and dimensions			
Overall length (with forks)	l1	9.28 m	30 ft 5 in
Length to face of forks	l2	8.08 m	26 ft 6 in
Overall width	b1	2.50 m	8 ft 2 in
Overall height	h17	3.10 m	10 ft 2 in
Overall cab width	b4	0.96 m	3 ft 2 in
Ground clearance	m4	0.38 m	1 ft 3 in
Wheelbase	y	3.05 m	10 ft
Tilt-up angle	a4	12 °	12 °
Tilt-down angle	a5	110 °	110 °
Turret rotation		360 °	360 °
Overall weight		18000 kg	39683 lb
Forks length / width / section	l / e / s	100 mm x 1200 mm x 60 mm	4 in x 47 in x 2 in
Wheels			
Standard tyres		445/65 R22,5	445/65 R22,5
Drive wheels (front / rear)		2 / 2	2 / 2
Steering mode		2 wheel steer, 4 wheel steer, Crab mode	2 wheel steer, 4 wheel steer, Crab mode
Stabilisers			
Stabs Type		Telescopic Duplex	Telescopic Duplex
Controls with stabs		Stabs Commands Individual or Simultaneous	Stabs Commands Individual or Simultaneous
Electric circuit			
Number of batteries / Battery		2 x 12 V	2 x 12 V
Battery capacity		120 Ah	120 Ah
Battery starting current		(EN)850 A	(EN)850 A
Engine/Battery			
Battery capacity		105 Ah	105 Ah
Battery nominal voltage		624 V	624 V
Battery max. voltage		700 V	700 V
Battery technology		Lithium-ion	Lithium-ion
Battery energy		65 kWh	65 kWh
Drive motor power		107 kW	107 kW
Hydraulic motor power		84 kW	84 kW
Transmission			
Transmission type		Electrical	Electrical
Number of gears (forward / reverse)		2/2	2/2
Max. travel speed		38 km/h	24 mi/h
Parking brake		Automatic negative parking brake	Automatic negative parking brake
Service brake		Oil-immersed multi-discs braking on front & rear axles	Oil-immersed multi-discs braking on front & rear axles
Hydraulics			
Hydraulic pump type		Fixed displacement piston	Fixed displacement piston
Hydraulic flow		175 l/min	46 US gpm
Hydraulic Pressure		350 bar	5076 PSI
Hydraulic tank capacity		200 l	53 US gal
Miscellaneous			
Steering wheels (front / rear)		2 / 2	2 / 2
Controls		2 Joysticks	2 Joysticks
Safety cab homologation		Cabin ROPS - FOPS Level 2	Cabin ROPS - FOPS Level 2
Attachment recognition system (E-Reco)		Standard	Standard

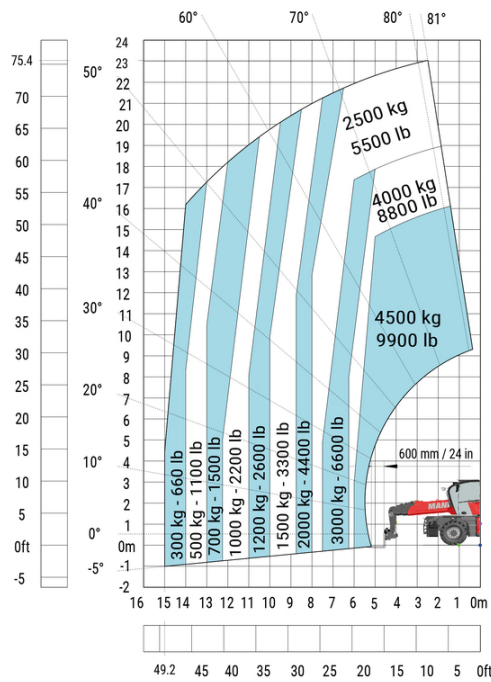
MRT 2660 e - Dimensional drawing



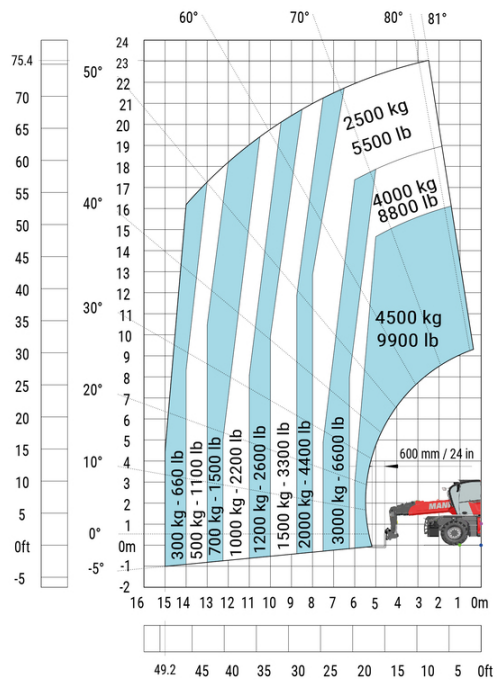
Other data		Metric	Imperial
Length of frame	l14	5.69 m	18 ft 8 in
Wheelbase	y	3.05 m	10 ft
Ground clearance	m4	0.38 m	1 ft 3 in
Counterweight offset (turret at 90°)	a7	2.97 m	9 ft 9 in
Tilt-up angle	a4	12°	12°
Tilt-down angle	a5	110°	110°
Overall length at stabilisers	l12	5.30 m	17 ft 5 in
External turning radius (over tyres)	Wa1	4.46 m	14 ft 8 in
Overall width with stabilisers extended	b7	5.78 m	19 ft
Overall height	h17	3.10 m	10 ft 2 in
Frame levelling corrector	a9	+/- 7°	+/- 7°
Ground clearance under front tires on stabilizers	m5	0.43 m	1 ft 5 in

MRT 2660 e - Load chart

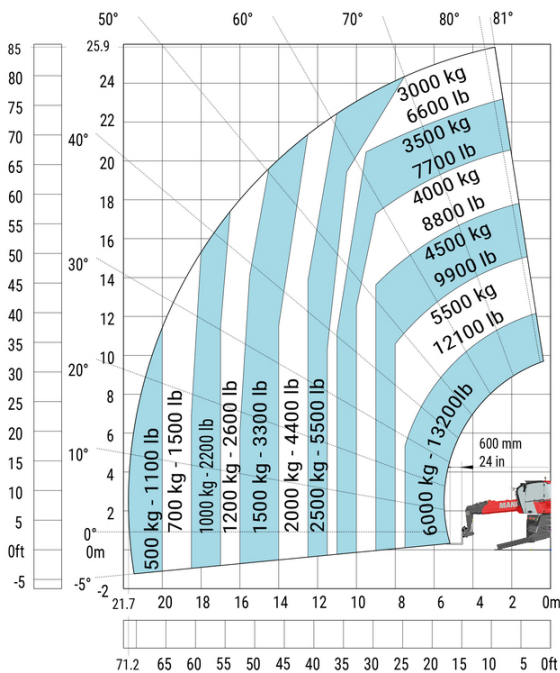
Machine on tyres with forks Metric



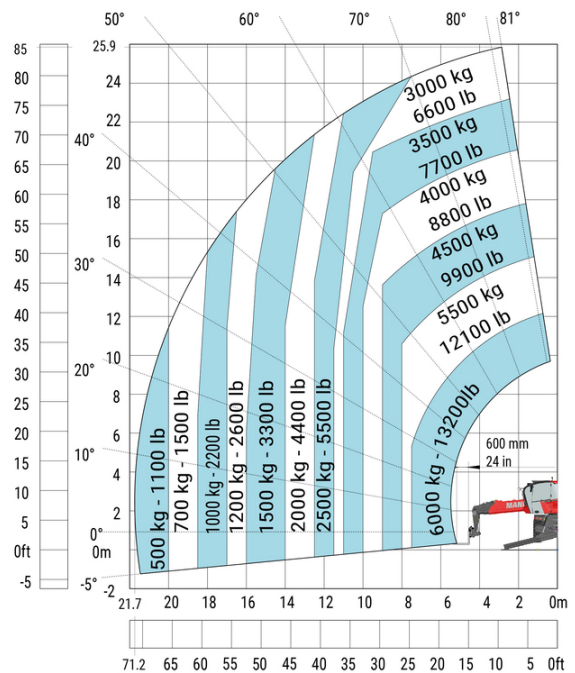
Machine on tyres with forks Imperial



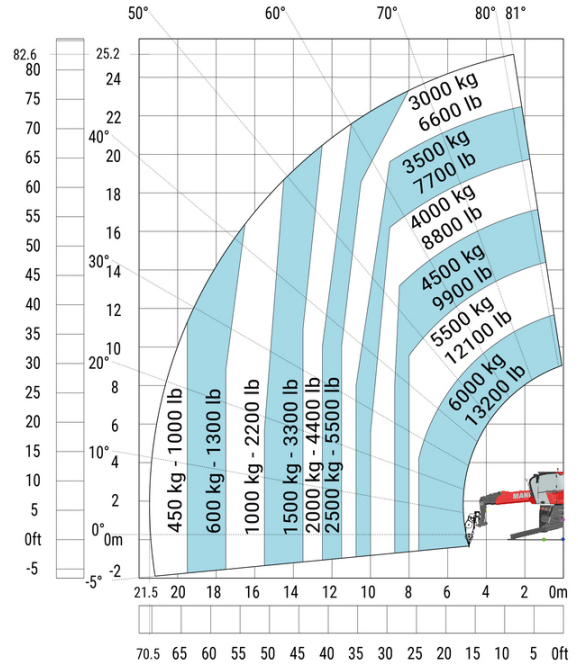
Machine on lowered stabilisers with forks (CAF) Metric



Machine on lowered stabilisers with forks (CAF) Imperial

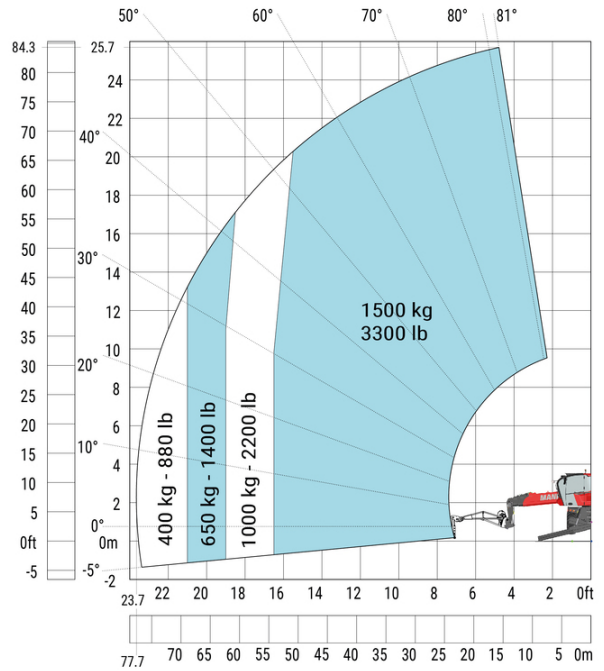
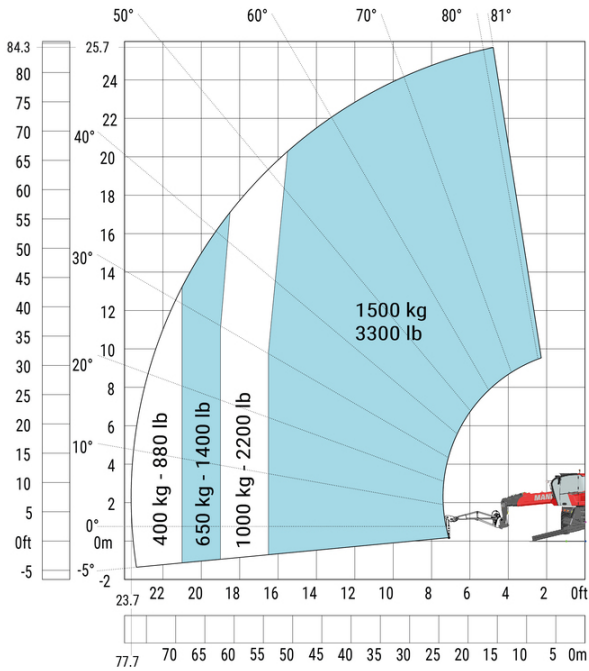


Machine on lowered stabilisers with winch 6000 kg (Metric) Machine on lowered stabilisers with winch 6000 kg (Imperial)

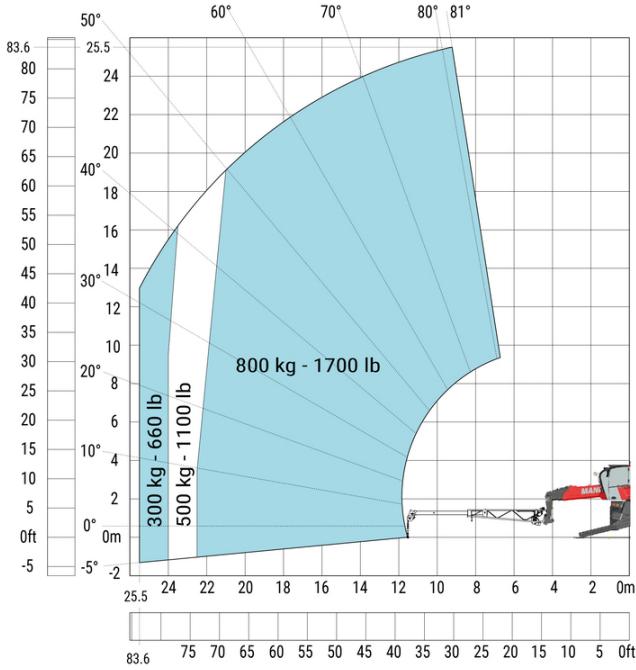


Machine on lowered stabilisers with 1500 kg jib with winch (Metric)

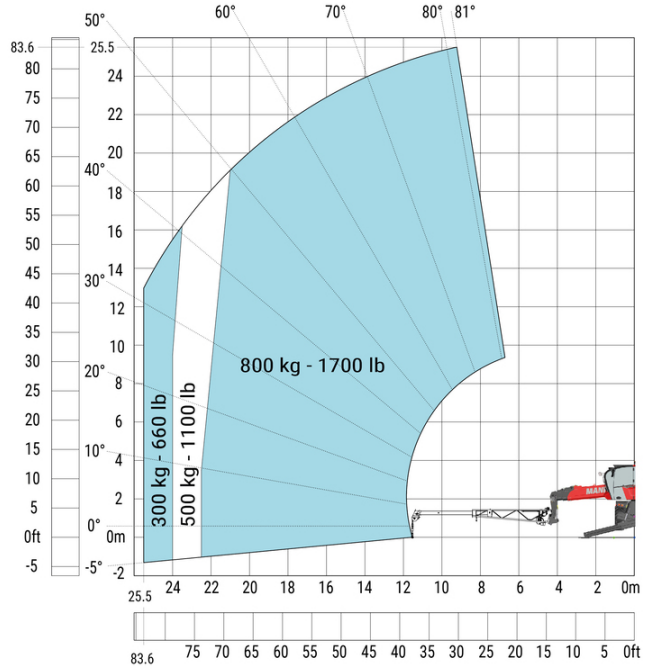
Machine on lowered stabilisers with 1500 kg jib with winch (Imperial)



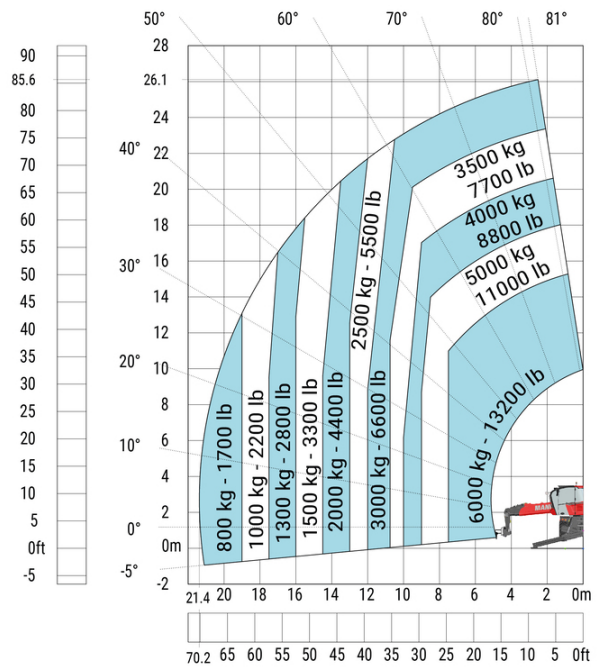
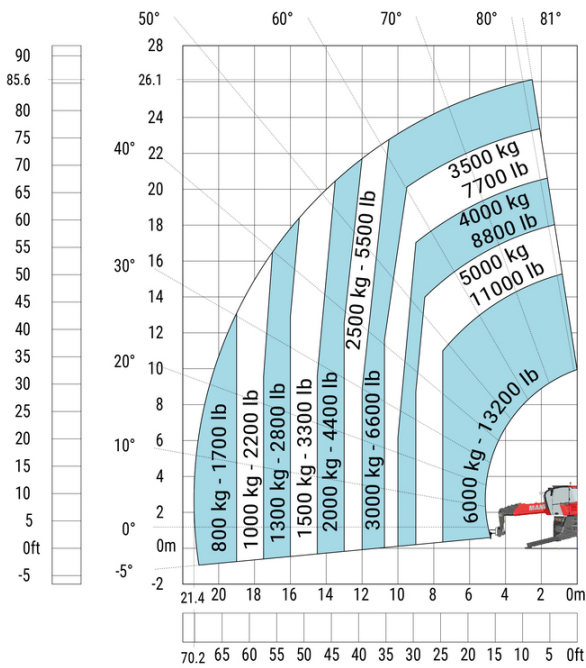
Machine on lowered stabilisers with extensible jib with winch (Metric)



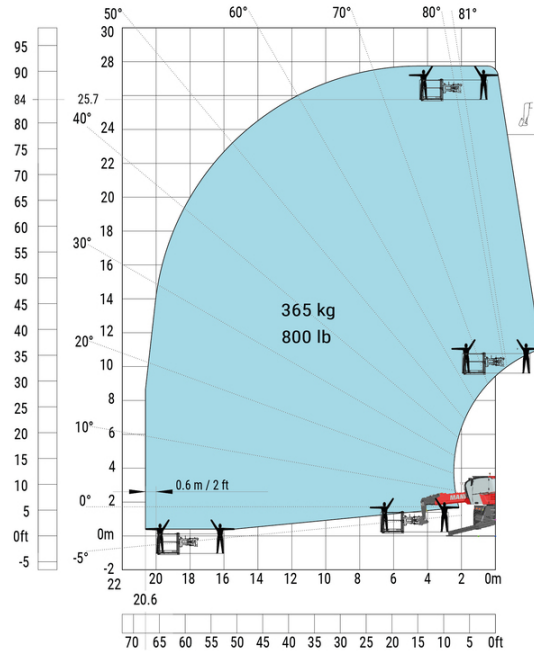
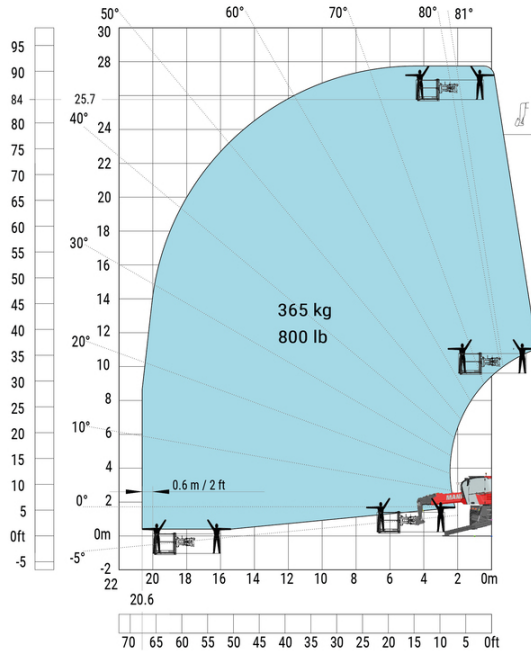
Machine on lowered stabilisers with extensible jib with winch (Imperial)



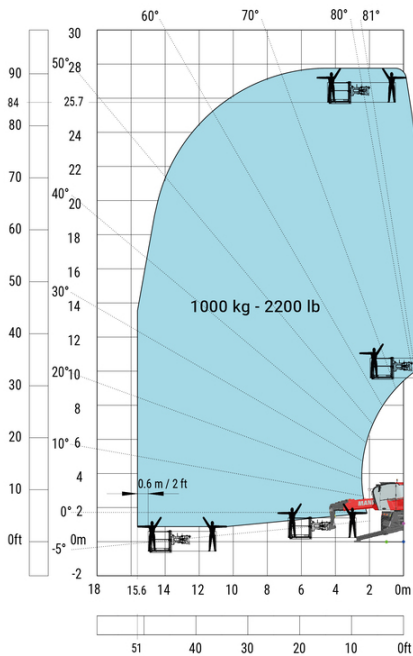
Machine on lowered stabilisers with hook 6000 kg (Metric) Machine on lowered stabilisers with hook 6000 kg (Imperial)



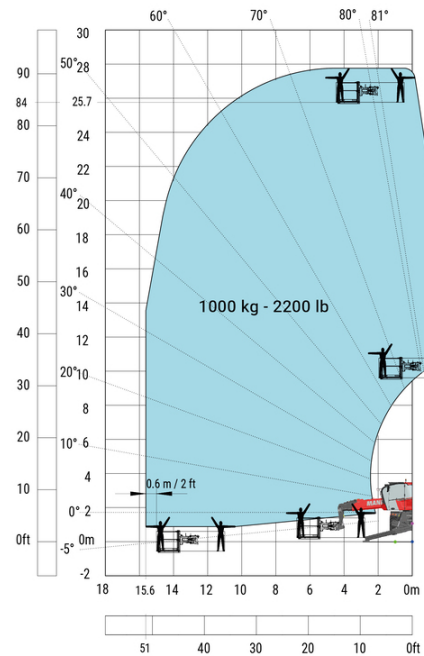
Machine on lowered stabilisers with 365 kg platform Metric Machine on lowered stabilisers with 365 kg platform Imperial



Machine on lowered stabilisers with 1000 kg platform Metric

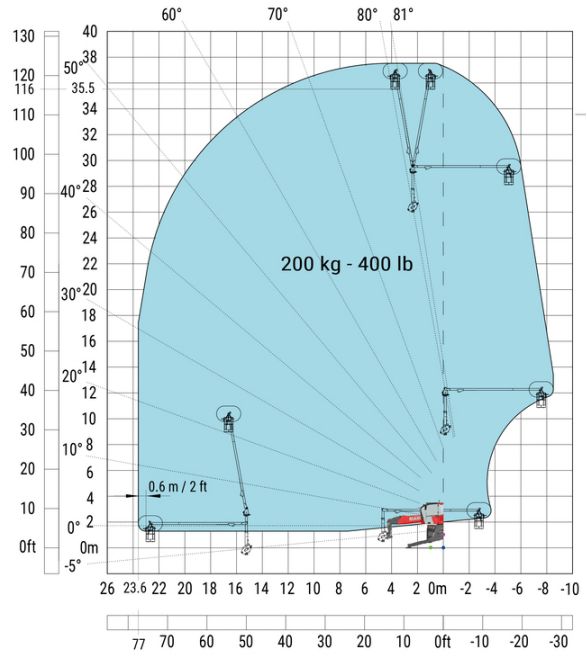
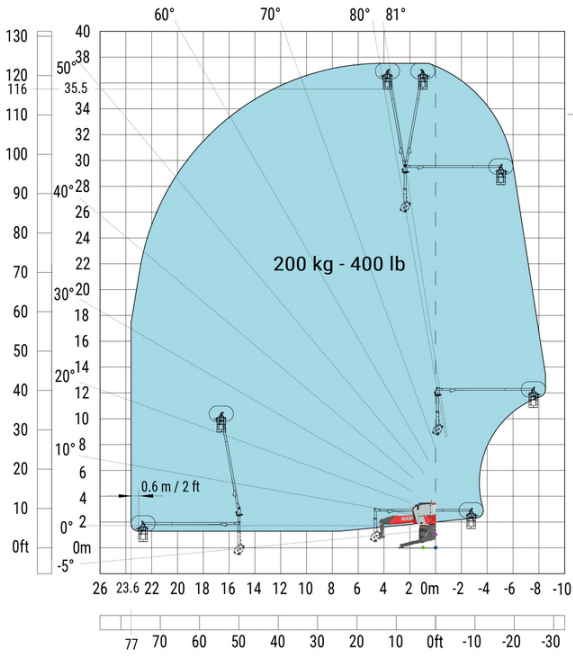


Machine on lowered stabilisers with 1000 kg platform Imperial



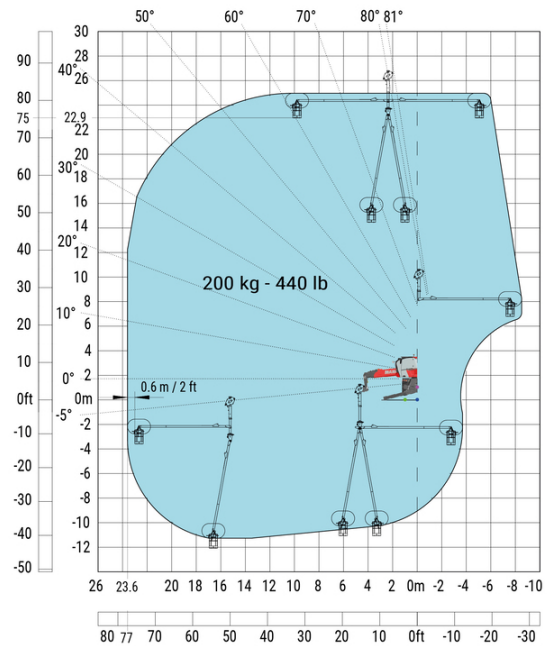
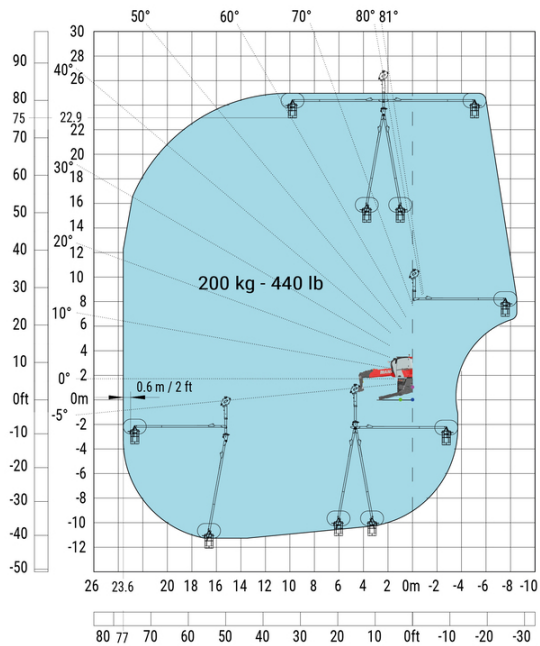
Machine on lowered stabilisers with 3D positive Metric

Machine on lowered stabilisers with 3D positive Imperial



Machine on lowered stabilisers with 3D positive / negative Metric

Machine on lowered stabilisers with 3D positive / negative Imperial



Equipment

Standard

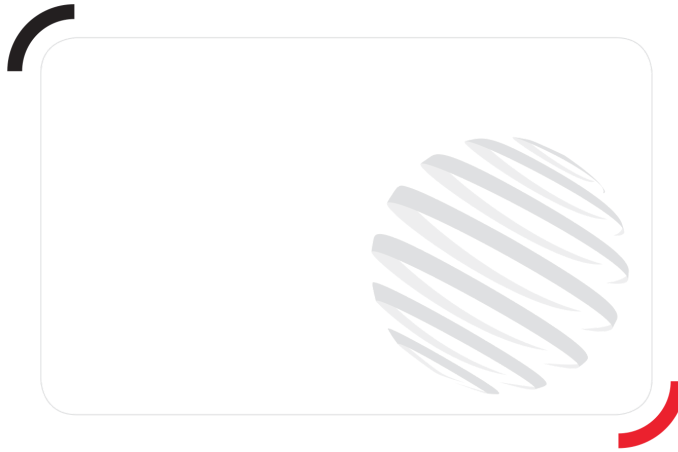
Optional

Additional battery high voltage 65 kWh

E-xtra generator 18.4 kW

Equipment: E-xtra generator 18.4 kW

Capacities		Metric	Imperial
Engine oil		3.40 l	0.90 US gal
Fuel tank		65 l	17 US gal
Engine			
Engine brand / nom		Yanmar / Stage V / Tier 4	Yanmar / Stage V / Tier 4
Engine model		3TNV80F-ZXKMU	3TNV80F-ZXKMU
Number of cylinders - Capacity of cylinders		3 - 1267 cm ³	3 - 77 in ³
Max. torque		74.50 Nm	55 ft/lbs
Power (kW)		18.40 kW	18 kW
Engine rotation		2800 rpm	2800 rpm
Engine rotation (min)		1900 rpm	1900 rpm
Engine cooling system		Water cooled	Water cooled
I.C. Engine power rating		25 Hp	25 Hp



Head Office

B.P. 249 - 430 rue de l'Aubinière

44150 Ancenis Cedex - France

Tel: +33 (0)2 40 09 10 11 - Fax: +33 (0)2 40 09 10 97

www.manitou.com



This publication provides a description of the configuration versions and options for Manitou products, which may differ for equipment. The equipment presented in this brochure may be part of a series, as an option, or it may not be available, depending on the versions. Manitou reserves the right, at any time and without notice, to amend the specifications described and represented. The specifications provided do not bind the manufacturer. For more details, please contact your Manitou agent. This is not a contractually binding document. The presentation of the products is not contractually binding. List of specifications non-exhaustive. The logos as well as the visual identity of the company are owned by Manitou and cannot be used without authorisation. All rights reserved. The photos and diagrams contained in this brochure are only provided for consultation and information purposes.

MANITOU BF SA - Limited company with board of directors - Share capital: 39,668,399 euros - 857 802 508 RCS Nantes